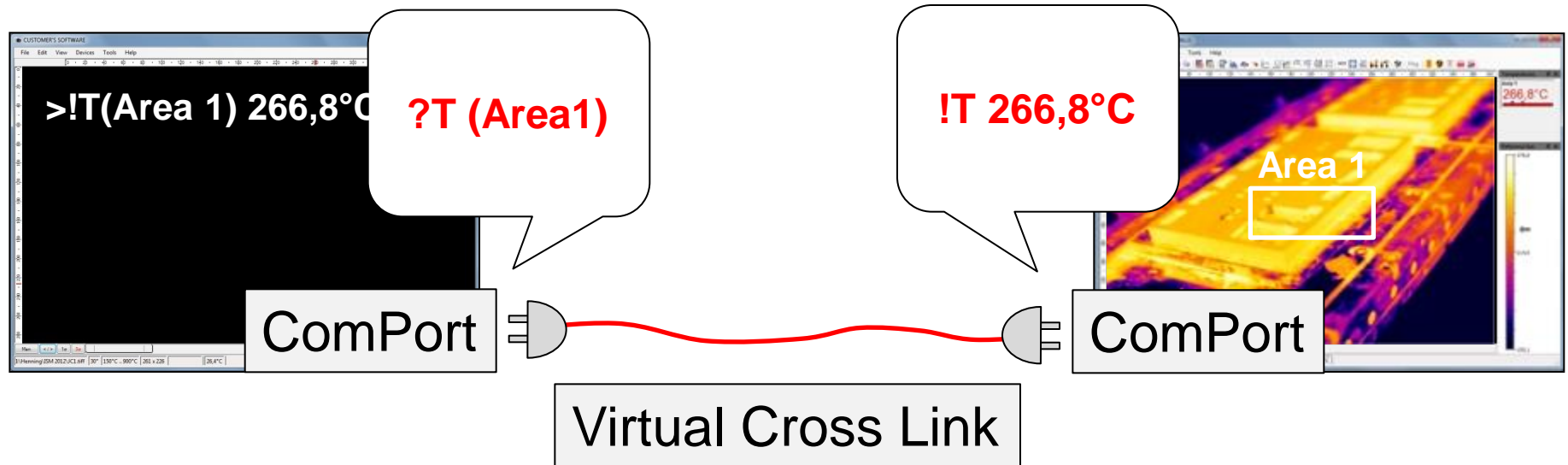


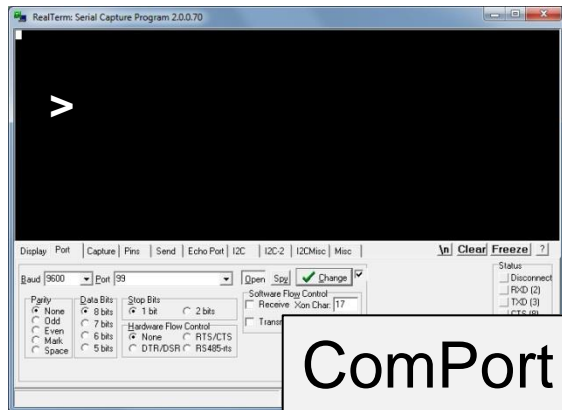
- Use of the serial interface of PIX Connect
(see Serial Communication Description.doc)
- Bidirectional communication
- Control loop structure in software
(e.g. SPS)
- PIX Connect: runs optris imager
- Com0com: cross cable emulator
- Realterm: terminal for COM port communication

- Use of an existing COM port
- If you don't have an existing COM port you need to create a pair of COM ports. One port gets the data from imager, the other port is accessed by your program.
- com0com – creates a pair of COM ports that are cross linked (see: **com0com-2.2.2.0-i386** on your CD)
- Realterm – a terminal program to check the communication (see: **Realterm_2.0.0.70_setup** on your CD)

ComPort Communication

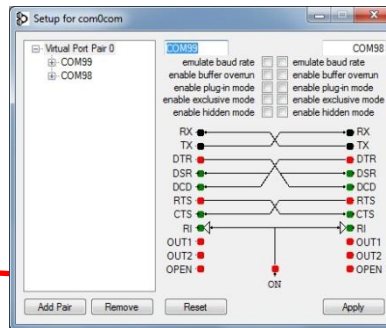


ComPort Demonstration

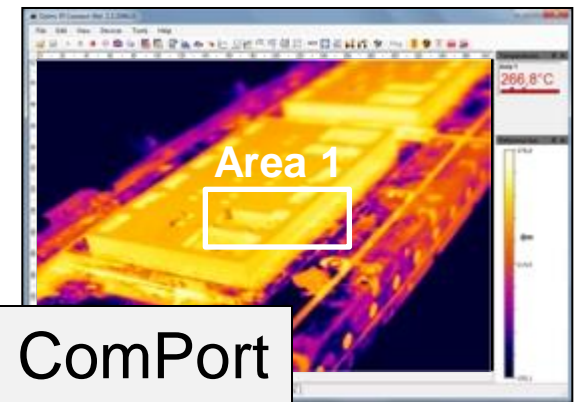


ComPort

Realterm



com0com



ComPort

PIX Connect

ComPort

- + Classical serial interface
- + No programming skills needed
- + All set and read commands available
- + Direct PLC connectability

Dynamic Link Library

- + Automatism
- + Temperature and colour values simultaneously
- + PI200: Visible pictures available
- + Connectable to all programming languages
- + Several imagers simultaneous